



AFRICA | CONSTRUCTION RANGE





Introducing the world's best construction equipment.

Ever since JCB was founded by Joseph Cyril Bamford in a small garage in Staffordshire in 1945, we've had a reputation for quality and innovation. Of course we've grown a bit since then – to employ over 10,000 people across 4 continents – but those two key characteristics remain at the heart of everything we do.

They're certainly epitomised in each and every one of the 300+ products in our range, along with virtues like efficiency, productivity, performance and safety. As such, JCBs are prized assets in every imaginable sector, including construction, engineering, road building, logistics and waste.

We enjoy a similarly broad spread when it comes to manufacturing and sales. Our machines are built at cutting edge engineering facilities everywhere from Britain to Germany, China, North America and India. Our products are sold and supported by a network of 2,000 dealer depots to over 150

countries worldwide, and JCB is global market leader in vehicles like backhoe loaders and telescopic handlers.

Perhaps this is because JCB has always believed in using only the most advanced technology, components and processes, complemented by meticulous design and rigorous testing. It's this pursuit of excellence that led us to set the diesel world land speed record of 350.092mph. It's a record we still hold.

JCB's parts support is also rather rapid: our state-of-the-art global network dispatches more than a million genuine parts and attachments every week, aiming to deliver anywhere on the planet within 24 hours.

Backing everything up is our world-renowned customer service network – the customer really is the focus of everything we do. So you can trust JCB to be there for you, wherever on Earth you may be.

CONTENTS

Backhoe loaders	4
Excavators	6
Mini excavators	8
Skid steer loaders	10
Compaction equipment	12
Wheel loading shovels	14
Telescopic handlers	16
Rough terrain fork lifts	18
Teletruk	19
Workmax	20
Light equipment	22
Generators and lighting towers	24
LiveLink	26
JCB support	27

NUMBER ONE IN AFRICA.

JCB PIONEERED THE BACKHOE LOADER IN 1953. SINCE THEN, WE'VE REMAINED THE MARKET LEADER USING CONSTANT INNOVATION. FROM THE 50HP SKID STEER DESIGNED ICX TO THE 118HP 5CX FOUR-WHEEL DRIVE MACHINE, WE DELIVER CLASS-LEADING PRODUCTIVITY, COMFORT AND FUEL SAVINGS.

World's best selling backhoe loader.

1 Half of all backhoes sold worldwide are JCBs.

Best-in-class operator comfort.

2 JCB backhoe loaders are designed around the operator for more productive working. With better all-round visibility and the largest cab glass area, operators can work safely fatigue-free.

Class-leading efficiency and productivity.

3 During roading, the 3CX Eco travels 26% further than its nearest competitor per litre of fuel when fitted with TorqueLock and is 30% quicker over the same distance.

Unrivalled serviceability.

4 Service access is best-in-class with a single-piece bonnet and 100% ground-level maintenance.

Low cost of ownership.

5 By extending service intervals for fluids and filters, JCB have brought down the cost of ownership even more.

UNEARTHED: KEY FACT

JCB's patented TorqueLock technology reduces fuel consumption by up to 25% whilst increasing speed and working area by up to 10% when roading.

UNEARTHED: KEY FACT

Whether roading, loading or excavating, our backhoe loaders deliver an average fuel saving of up to 16% with lower emissions and noise levels.





		ICX	2DX	2CX	3DX
Operating weight	kg	2790	6480	5900	7800
Gross engine power	kW (hp)	37.3 (50)	49.5 (66)	55 (75)	68.6 (92)
Dig depth	ret / ext m	2.55 / 3.08	4020	3.02 or 3.67 / 3.02	4.77
Steer mode		Skid	2WS	4WS	2WS
Loader shovel breakout	kgf	2350	4390	3600	6500
Maximum dipper tearout	ret / ext kgf	1488	2910	1733 / 2284	3010
Maximum bucket tearout	kgf	2201	5158	4200	5700
Optimum pump flow	lpm	45	96	81	123



4



5



		3CX	4CX	4CX SM	5CX
Operating weight	kg	7370	7950	8660	9810
Gross engine power	kW (hp)	68.6 (92)	74.2 (100)	74.2 (100)	87 (118)
Dig depth	ret / ext m	4.74	4.32	4.32 / 5.53	5.35 / 6.51
Steer mode		2WS	4WS	4WS	4WS
Loader shovel breakout	kgf	6170	6227	6590	6590
Maximum dipper tearout	ret / ext kgf	3217	3893	2729 / 3903	2675 / 3722
Maximum bucket tearout	kgf	6324	6228	6228	5387 / 6230
Optimum pump flow (control type dependant)	lpm	143	165	165	165

DESIGNED WITH THE OPERATOR IN MIND.

JCB HAS BEEN BUILDING EXCAVATORS SINCE 1963. OUR LATEST RANGE IS 13 MODELS STRONG AND HAS TRACKED OR WHEELED OPTIONS FROM 12 TO 46 TONNES. EACH MACHINE IS DESIGNED FOR STRENGTH, PRODUCTIVITY, LOW COST OF OWNERSHIP, SAFETY AND OPERATOR COMFORT COMBINED WITH THE BEST BACK-UP IN THE BUSINESS.

Productivity and efficiency.

1 Our advanced hydraulics reduces fuel consumption and raise productivity for maximum efficiency.

For optimum productivity, we supply a range of territory compliant engines providing plenty of torque, uniquely tuned and adapted for each excavator.

Strength and durability.

2 Our tough undercarriage is a fully welded X-frame for long-term strength, even in the toughest applications.

Low maintenance.

3 Low maintenance and easy to service, making them affordable, efficient and highly productive.

Operator environment.

4 Superb comfort and fatigue-free working. A SMART Control System for precision and power when you need them.

Excellent visibility.

5 Hydraulic functions can be isolated. Large glass area and low bonnet for excellent visibility.

UNEARTHED: KEY FACT

When we design our excavators, we put the operator in the driving seat to make sure that all the features are easy, fast and safe to use for fatigue-free working.



UNEARTHED: KEY FACT

Each of our 10 tracked and 3 wheeled models comes with 65 years' JCB manufacturing excellence as standard, and over 45 years of specialist excavator expertise.





		JS120	JS140	JS205	JS220	JS240	JS260	JS290	JS330	JS360	JS460
Operating weight	tonnes	12.6	13.5	19.8 – 21.2	21.1 – 23.5	24.2 – 24.6	25.4 – 27.2	30.4 – 31.2	32.0 – 34.7	36.5 – 38.0	44.7 – 46.4
Gross engine power	kW (hp)	59.6 (80)	74.56 (100)	106 (140)	128 (172)	147 (198)	147 (198)	161 (216)	212 (281)	212 (281)	228 (306)
Dipper options	m	1.95 / 2.25 / 2.8	2.1 / 2.5 / 3.0	1.91 / 2.4 / 3.0	1.91 / 2.4 / 3.0	2.0 / 2.44 / 3.09 / 3.53	2.0 / 2.44 / 3.09 / 3.54	2.5 / 3.1 / 3.7	2.21 / 2.63 / 3.23 / 4.03	2.21 / 2.63 / 3.23 / 4.03	2.5 / 3.36 / 4.0
Undercarriage options		SC / LC	SC / LC	NLC / SC / LC	NLC / SC / LC	NLC / SC / LC	NLC / SC / LC	NLC / LC	LC / NLC	LC / NLC	LC
Machine variants		MONO	MONO	MONO / TAB	MONO / TAB / XD / LONG REACH	MONO	MONO / TAB / XD / LR	MONO / XD	MONO / TAB / XD / ME / LR / HRD	MONO / TAB / XD / ME / LR / HRD	MONO
Max. dipper tearout	kN	56.8	73.7	117	143	179	179	164	199	254	250.9
Max. bucket tearout	kN	84.4	91.2	132.5	155	192	192	226	191	268	295.3
Pump flow	lpm	2 x 111	2 x 130	2 x 220	2 x 214	2 x 226	2 x 226	2 x 250	2 x 290	2 x 310	2 x 346



		JS145W	JS175W	JS200W
Operating weight	kg	14645	17500	22809
Gross engine power	kW (hp)	92 (123)	128 (172)	128 (172)
Max dig depth	mm	5675	6451	6370
Max reach at ground level	mm	8585	9163	9850
Max loadover height	mm	7400	7174	6980
Travel speed (high)	km/h	30	30	30
Machine variants		MONO / TAB	MONO / TAB	MONO / TAB
Max. dipper tearout	kN	93	108	174
Max. bucket tearout	kN	82	105	125

ULTIMATE VERSATILITY AND MANOEUVRABILITY.

FROM COMPACT EXCAVATORS WHICH CAN FIT THROUGH A STANDARD DOOR TO LARGER PERFORMANCE MACHINES, JCB HAS A COMPREHENSIVE RANGE TO SUIT ANY APPLICATION. RANGING FROM 950 TO 5200KG THEY ARE AVAILABLE IN CONVENTIONAL, REDUCED AND ZERO TAILSWING.

UNEARTHED: KEY FACT

All our machines are compact and powerful enough to guarantee you impressive levels of productivity, however hard you work them.

Quality, reliability and durability.

1 To achieve ultimate build quality, we use state-of-the-art manufacturing and design processes as well as the most reliable, durable components available.

Low cost of ownership.

2 A load-sensed, flow-on-demand hydraulic system provides hydraulic oil only when you need it, saving you fuel.

Safety built in.

3 Excellent 360 all-round visibility makes for safe operation.

Comfort and ergonomics.

4 The JCB mini excavator range is designed with comfort and ergonomics to the fore.

Height performance.

5 They're compact, powerful, versatile, efficient machines with class-leading features.

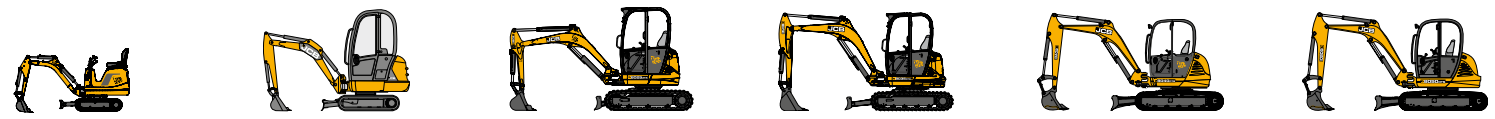




4



5



		8008 CTS	8016 CTS	8025 ZTS / ZTSLC	8035 ZTS	8040 ZTS	8050 ZTS / RTS
Operating weight standard dipper	kg	950	1657	2806 / 2833	3651	4300	5235 / 4930
Gross engine power	kW (hp)	9 (12)	14.7 (19.7)	20.9 (28)	23.6 (31.6)	34.1 (46.4)	34.1 (46.4)
Dipper length	mm	880	1161 / 1261	1100	1525	1525	1725 / 1900
Dig depth	mm	1690	2271 / 2366	2580 / 2452	3179	3341	3542 / 3764
Ground level reach	mm	3110	3974 / 4060	4691 / 4425	5315	5613	5844 / 6025
Dump height	mm	1980	2531 / 2626	3158 / 2707	3482	3843	3977 / 4102
Fuel tank capacity	Ltr	11.5	23.5	40	40	68	68
Bucket tearout	kN	9.3	16.2	24	32	37.1	42.2
Dipper tearout	kN	4.6	7.1	15	20	23	26.1 / 23.75
Pump flow	lpm	2 x 11.2	43.6	102	110	169	169
Machine width	mm	700 to 865	1000	1550	1750	1980	1980

WORLD'S SAFEST SKID STEERS.

OUR SKID STEER LOADER RANGE BOASTS A COMPREHENSIVE 8 WHEELED AND 4 TRACKED MODELS. OUR UNIQUE SINGLE BOOM LOADER WITH SIDE ENTRY HAS BEEN SPECIALLY DESIGNED, DEVELOPED AND BUILT AT A COST OF OVER \$60M AND ARE SAFER, MORE ECONOMICAL AND MORE PRODUCTIVE THAN THEIR FRONT ENTRY RIVALS.

UNEARTHED: KEY FACT

Wherever you're working, the versatility, manoeuvrability and visibility provided by JCB skid steer and track loaders make them absolutely invaluable.



The world's safest skid steer.

1 The world's safest compact loader with unique side door for easy entry and exit.

The world's greatest visibility skid steer.

2 60% better all-around visibility versus the conventional twin arm skid steer and track loader.

The world's most comfortable skid steer.

3 Largest operation area in the industry – 46% larger than our average competitor on small platform, 33% for large platform.

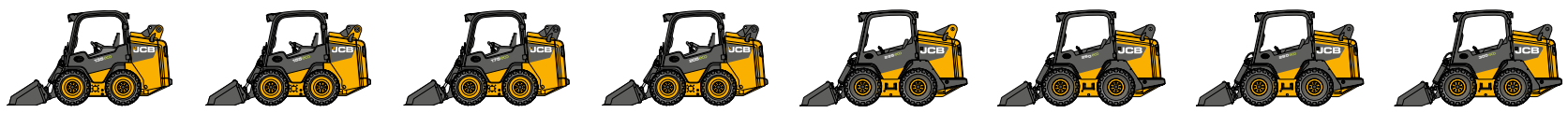
Class-leading serviceability.

4 Based on the SAE Service Audit Scores, JCB is 24% better on large platform and 21% better on small platform on average compared to the competition.

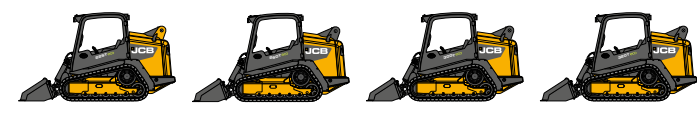
The world's most efficient skid steer.

5 Up to 16% better fuel consumption than the rival products.





		135	155	175	205	225	260	280	300
Lift path		Radial Lift	Radial Lift	Vertical Lift	Vertical Lift	Radial Lift	Vertical Lift	Vertical Lift	Vertical Lift
Operating weight	kg	2752	2844	3011	3237	3679	3805	3867	4067
Gross horsepower	kW (hp)	35.7 (47.9)	44.7 (59.9)	44.7 (59.9)	44.7 (59.9)	55 (74)	55 (74)	55 (74)	68.6 (92)
Gross torque	Nm	143	189	189	189	327	327	327	408
Rated operating capacity	kg	612	703	794	930	1021	1179	1271	1360
Tipping load	kg	1356	1406	1587	1859	2226	2471	2453	2732
Loader lift force	kg	1440	1770	1570	1570	2669	2634	2634	2634
Bucket breakout force	kg	1820	1820	2140	2140	2585	3260	3260	3260
Auxiliary hydraulic flow	lpm	70	70	70	70	87	87	87	87



		225T	260T	300T	320T
Lift path		Radial Lift	Vertical Lift	Vertical Lift	Vertical Lift
Operating weight	kg	4605	4628	4836	4961
Gross horsepower	kW (hp)	55 (74)	55 (74)	68.6 (92)	68.6 (92)
Gross torque	Nm	327	327	408	408
Rated operating capacity - 30%	kg	1021	1179	1361	1452
Rated operating capacity - 50%	kg	1458	1812	1957	2074
Tipping load	kg	2915	3624	3913	4148
Loader lift force	kg	2669	2634	2634	2634
Bucket breakout force	kg	2585	3260	3260	3260
Auxiliary hydraulic flow	lpm	87	87	87	87



PERFORMANCE, QUALITY AND COMFORT.

WITH VIBROMAX'S HERITAGE IN THE SOIL COMPACTION MARKET, AND JCB'S REPUTATION FOR BUILD QUALITY AND DESIGN INNOVATION, OUR RANGE DELIVERS UNRIVALLED QUALITY AND RELIABILITY. FROM 0.7 TO 20 TONNES, OUR MACHINES BOAST CLASS-LEADING PERFORMANCE AND LOW COST OF OPERATION FOR ULTIMATE PRODUCTIVITY.

Low maintenance.

1 The drums have pre-loaded rubber mountings for increased component life-time and protection of hydraulic installations.

Ease of operation.

2 Extremely low noise and vibration levels.

Class-leading compaction performance.

3 A superior chassis provides excellent weight distribution, large fuel tanks and a sophisticated traction control system provides great gradability.

Serviceability.

4 All components are easily accessible, some of them from the centralised service station.

Operator comfort.

5 Easy and safe access with large steps and ergonomic grab handles.



UNEARTHED: KEY FACT

The unique single-piece exciter shaft in our vibratory tandem rollers is extremely durable for maximum uptime.





		VMD70	VMD100	VMT160	VMT260	VMT380/430	VMT860	VMI15D/PD	VM200
Performance DIN 6271	kW (hp)	6.6 (9)	6.6 (9)	17 (23.5)	24.4 (33.2)	33.6 (45.7)	63 (85)	97 (130)	129 (173)
Operating weight (CECE)	kg	740	920	1840 / 1980	2670 / 2940	3750 / 4300	9250	11300 / 12150	19700
Operating width	mm	650	750	800 / 900 / 1000	1000/1200	1300 / 1400	1675	2100	2100
Frequency	Hz	60	60	50 / 66	50 / 66	50 / 59 / 66	33 / 50	31 / 36	29 / 35
Amplitude	mm	0.38	0.32	0.5	0.5	0.44	1.1 / 0.23	1.95 / 0.9	2.0 / 0.75
Centrifugal force	kN	26.3	32.5	9.2 / 18	26 / 45	34 / 59	37 / 71	163 / 261	370 / 205

COMFORT AND PERFORMANCE.

JCB HAS NEARLY 45 YEARS EXPERIENCE IN MANUFACTURING LOADERS. OUR RANGE INCLUDES 8 POWERSHIFT MODELS. BASE MODELS CAN BE TAILORED TO SPECIFIC INDUSTRY SECTORS SUCH AS WASTE AND RECYCLING, ENSURING THAT WHATEVER YOUR BUSINESS, YOU HAVE THE RIGHT TOOLS FOR THE JOB.

Productivity and efficiency.

1 Optional Driveline Efficiency Package unlocks additional savings.

Innovative variable displacement pumps feed a load-sensing valve block, only consuming power on demand.

Performance.

2 Load-sensing hydraulics only use power on demand for maximum efficiency.

Strength and durability.

3 Our wheeled loaders have innovative load-sensing hydraulics for precise and efficient control.

Operator environment.

4 A sloping rear bonnet design gives excellent all-round visibility.

Low on maintenance.

5 By using premium components and building in long service intervals, we've designed the wheeled loaders to spend as much time as possible hard at work.

UNEARTHED: KEY FACT

Keeping the operator comfortable is key to productivity and all the controls are adaptable to individual needs. Other comforts include heated seat and mirrors, optional air conditioning and plenty of storage space.





		422ZX	426HT	426ZX	436HT	436ZX	456HT	456ZX	467ZX
Max. operating weight	kg	11900	13025	14576	14576	14989	20189	18992	23800
Max. gross engine power	kW (hp)	93 (125)	123 (165)	123 (165)	133 (178)	133 (178)	160 (215)	160 (215)	216 (290)
Shovel capacity	m ³	1.7	2.4	2.4	2.7	2.7	3.5	3.5	4.2
Full turn tipping load	kg	6600	7944	8051	9436	9055	12368	12577	15300
Payload	kg	3300	3972	4025	4718	4527	6184	6288	7627
Max. breakout force	kN	101	123	129	134	162	143	154	188
Dump height @ 45°	mm	2860	2860	2878	2883	2833	3027	2845	2849

THE WORLD'S NUMBER ONE.

JCB PIONEERED TELESCOPIC HANDLING TECHNOLOGY IN 1977. TODAY WITH MODELS, WE OFFER THE INDUSTRY'S WIDEST SELECTION FROM COMPACT TO 20M LIFT HEIGHT MACHINES. ALL ARE DESIGNED, BUILT AND TESTED TO THE HIGHEST STANDARDS.

World's leading telescopic handler.

1 Nearly one out of every three sold is a JCB.

Ease of operation.

2 Exceptional manoeuvrability ensures easy operation on any site. Effortless, precision control results in maximum productivity.

Productivity.

3 JCB's DIESELMAX engine gives improved power and productivity.

The side-mounted JCB engine combines with JCB axles and transmission to ensure a reliable drivetrain performance from well-proven telescopic loader components.

Four wheel drive and good ground clearance means you can work anywhere.

Easy service access.

4 All service checks are quick, simple and safe to carry out from ground level.

Operator comfort.

5 Ergonomically positioned controls and optional air conditioning reduce operator fatigue.

UNEARTHED: KEY FACT

The loadall chassis levelling option offers $\pm 9^\circ$ of chassis oscillation for operation on uneven terrain.





		527-55	527-58	531-70	535-125 HiViz	535-140 HiViz	540-140	540-170	540-200	541-70	550-80	550-140
Maximum lift height	mm	5600	5800	7000	12300	13800	13800	16700	20000	7000	8100	13500
Maximum lift capacity	kg	2700	2700	3100	3500	3500	4000	4000	4000	4100	4990	4535
Maximum forward reach	mm	3300	3000	3700	8100	9700	9250	12500	15900	3700	4470	9390
Lift capacity at full reach	kg	1250	1250	1250	1150	1250	1250	600	200	1500	1500	1133
Overall height	mm	2100	2000	2490	2590	2590	2590	2690	2718	2490	2590	2590
Overall width over tyres	mm	2000	2040	2230	2350	2350	2350	2440	2439	2230	2420	2350
Overall length to front carriage	mm	4000	4420	4990	5800	6230	6230	6360	6813	4990	5270	6250
Turn radius over tyres	mm	3000	3150	3700	3750	3750	4100	4100	4100	3700	4250*	4100
Total weight (unladen)	kg	5650	5500	7060	9720	10880	11090	12060	12985	7850	10150	11090
Engine (gross)	kW (hp)	63 (85)	63 (85)	55 (75)	63 (85)	63 (85)	63 (85)	74.2 (100)	74.2 (100)	74.2 (100)	93 (125)	74.2 (100)

WORK ANYWHERE VERSATILITY.

JCB ROUGH TERRAIN FORKLIFTS (RTFL) ARE THE RELIABLE, VERSATILE AND EASY-TO-USE SOLUTION FOR VIRTUALLY ANY RE-HANDLING ENVIRONMENT YOU CAN THINK OF. DESIGNED FOR HIGH MOBILITY AND SUPERB PRODUCTIVITY, OUR TRIO OF RTFLS HAVE A RANGE OF OPERATING WEIGHTS, LIFT CAPACITIES AND DIMENSIONS TO SUIT, ALL POWERED BY OUR WORLD-RENOWNED EFFICIENT DIESELMAX ENGINE.

High on power and torque.

1 A 55kW JCB DIESELMAX engine produces high power and torque at low revs for fuel savings and an 18mph top speed.

Proven JCB transmission.

2 JCB's Synchro Shuttle transmission gives fast, smooth directional changes and a Sideshift feature means you can accurately place materials on scaffolding.

Designed for productivity.

Durable, efficient and ergonomic, JCB RTFLs are designed for productivity, pure and simple.

Total versatility.

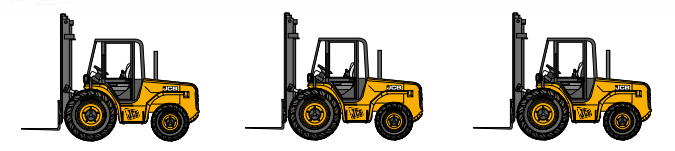
A choice of 4 mast heights, attachments, carriage types and a range of tyres cover all applications and environments.

Minimum servicing.

Minimum servicing. Less service downtime means more time performing and earning



UNEARTHED: KEY FACT
JCB's RTFL transmission allows fast directional changes, great performance and superb traction for ultimate productivity no matter what the surface.



		926	930	940
Lift capacity	kg	2600	3000	4000
Gross power	kW (hp)	55 (75)	55 (75)	55 (75)
Transmission type		Synchromesh	Synchromesh	Synchromesh
Hydraulic flow	lpm	55	55	55
Turning radius	m	4.38	4.38	4.45
Operating weight	kg	5910	6340	7500
Fuel tank	l	88	88	88
Mast options				
3.6m duplex mast		✓	✓	✓
4.5m triplex mast		✓	✓	✓
5.5m triplex mast		✓	✓	✓
6.7m triplex mast		✗	✗	✓

WORLD'S MOST VERSATILE LIFT TRUCK.

COMBINE THE SMALL FOOTPRINT OF AN INDUSTRIAL COUNTERBALANCED LIFT TRUCK, THE TELESCOPIC BOOM OF A TELESCOPIC HANDLER, A FULLY ENCLOSED HYDROSTATIC DRIVE SYSTEM AND A HYDRAULIC QUICK-DISCONNECT CARRIAGE FOR ATTACHMENTS AND YOU HAVE THE TELETRUK. THE RANGE COVERS 3000KG TO 3500KG CAPACITY AND INCLUDES TWO DIESEL-POWERED TWO-WHEEL DRIVE AND TWO FOUR-WHEEL-DRIVE MODELS.

Saving you time and money.

1 JCB Teletruk has a telescopic boom instead of a vertical mast. Our unique design reduces overheads, saves time, space, and improves site safety. All of which can translate into huge financial savings.



Unrivalled versatility.

2 The Teletruk forklift provides unrestricted forward visibility, speeds up attachment changes, has increased fork carriage rotation and allows single-side lorry loading/unloading due to its superior reach.



More choice.

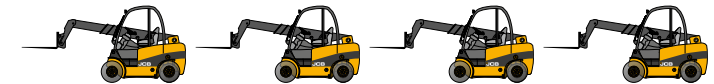
A JCB Teletruk typically comes with alternative fuel options – LPG or diesel choices are available on the TLT25 and TLT30 – as well as heavy lift option. A 4X4 spec is also available on the TLT30 and TLT35.

Greater flexibility.

A special range of purpose designed attachments makes completing jobs even easier. For instance, you can change from forks to shovel in less than 20 seconds without even leaving the cab.



UNEARTHED: KEY FACT
The Teletruk offers 4WD as an option so it can operate on gradients and poor surfaces where ordinary forklifts can't go.



		TLT30D	TLT30D 4X4	TLT35D 4X4	TLT35D
Maximum lift capacity	kg	3000	3000	3500	3500
Capacity @ 2m forwards reach	kg	1750	2000	2400	2100
Maximum lift height	mm	4100	4000	4350	4400
Maximum forwards reach	mm	2390	2390	2450	2430
Fuel type		Diesel	Diesel	Diesel	Diesel
Turning radius	mm	2490	2995	3500	2885
Unladen weight	kg	4900	5100	5500	5100
Overall height (std / low)	mm	2205 / 2105	2300 / 2200	2300 / 2200	2205 / 2105
Overall width	mm	1280	1400	1400	1280
Ground clearance at lowest point	mm	130	165	175	125
Shovel rated capacity	m ³	0.6	0.6	0.6	0.6

GO-ANYWHERE PERFORMANCE.

THE JCB WORKMAX IS DESIGNED FOR DURABILITY, PRODUCTIVITY AND COMFORT. NO MATTER WHAT YOU SPECIALISE IN, THESE OFF-ROAD VEHICLES ENABLE TO TRANSPORT EQUIPMENT AND MATERIALS OVER FINE TURF OR ROUGH CONDITIONS.

UNEARTHED: KEY FACT
Spacious interior with flat floor – lots of leg room



UNEARTHED: KEY FACT
Tailoring service lets you adapt machines for specific use

Tough, versatile, reliable.

- 1 JCB Workmax are go-anywhere Utility Terrain Vehicles.
- 2 These machines enable you to transport equipment, materials, livestock and people over fine turf or rough conditions.
- 3 They are easy to get from site to site, with travel speeds of up to 50kph.
- 4 Ability to carry 500kg and tow 500kg at the same time
- 5 Additional options and attachments let you tailor your vehicle to specific applications.





		6x4	800D	1000D
Engine power kW	kW (hp)	15.3 (20.5)	14.9 (20)	19.5 (26)
Unladen weight - with ROPS, fuel and fluids	kg	630	710	850
Cargo capacity	kg	500	400	500
Max. travel speed	kph	29	40	50
Tipping angle	degrees	53	55	55
Towing capacity	kg	-	500	-

LIGHT EQUIPMENT.

THE JCB LIGHT EQUIPMENT RANGE IS ONE OF THE MOST EXTENSIVE AROUND. WE'VE GOT EVERYTHING FROM POWERPACKS TO HANDHELD BREAKERS, PUMPS AND DRILLS. EACH MACHINE BENEFITS FROM JCB'S USUAL UNRIVALLED QUALITY, INNOVATION AND RELIABILITY.

UNEARTHED: KEY FACT

The HM25LV breaker when used with the Beaver Powerpack gives the ultimate in terms of performance and ultra low hand arm vibration level.

UNEARTHED: KEY FACT

Beaver - a powerful and robust Powerpack yet still lightweight, ideally suited to the rigours of the rental market, is the most popular Powerpack in the JCB range.





POWERPACKS		MICRO	COMPACT	BEAVER	BEAVER (DIESEL)	BEAVER (ELECTRIC START)	TROJAN (20L)	TROJAN (30L)	MULTIFLOW
Engine		Honda GX160	Honda GX160	Honda GX240	Lombardini I5LD	Lombardini I5LD	Honda GX390	Honda GX390	Briggs and Stratton Vanguard
Fuel		Petrol	Petrol	Petrol	Diesel	Diesel	Petrol	Petrol	Petrol
Power	kW (hp)	4.1 (5.5)	4.1 (5.5)	6 (8)	5 (6.8)	5 (6.8)	9.7 (13)	9.7 (13)	13.4 (18)
Hydraulic flow	lpm	0 - 20	0 - 20	0 - 20	0 - 20	0 - 20	0 - 20	0 - 30	0 - 20, 30, 40
Weight	kg	45.5	57.5	66	83	92	93	93	102
Hose length	m	5	7	7	7	7	7	7	7



HAND HELD BREAKERS		D-PICK	T-PICK	HM22	HM25	HM25 LV	HM29
Weight	kg	15	15	21	26	27	29
Hydraulic flow	lpm	15 - 22	15 - 22	15 - 22	18 - 22	18 - 22	18 - 22
Vibration (BS8622-5)	m/s ²	7.5	7.5	3.4	4	1.6	5
Sound power level	dB Lwa	106	106	106	108	108	108



MISC		EARTH DRILL	DISC CUTTER	DIAMOND CORE DRILL	REVERSIBLE DRILL	ROTARY IMPACT DRILL	IMPACT WRENCH
Weight	kg	15	10	8	2.7	3.9	5.6
Hydraulic flow	lpm	15 - 25	18 - 21	15 - 25	15 - 30	19 - 33	15 - 45

GENERATORS AND LIGHTING TOWERS.

JCB POWER PRODUCTS OFFER AN EXTENSIVE RANGE OF OVER 170 GENERATORS AND LIGHTING TOWERS. AS WITH ALL OUR MODELS, THESE MACHINES ARE DESIGNED TO MEET THE RIGORS OF THE LOCAL ENVIRONMENT WHILST BEING EASY TO MAINTAIN AND OFFERING A HIGH LEVEL OF RELIABILITY.

Efficient performance.

Tried and proven performance, economy and low noise to suit a range of applications.

Total control.

Digital control panels provide easy machine monitoring, as well as enabling remote programming for hard to reach sites.

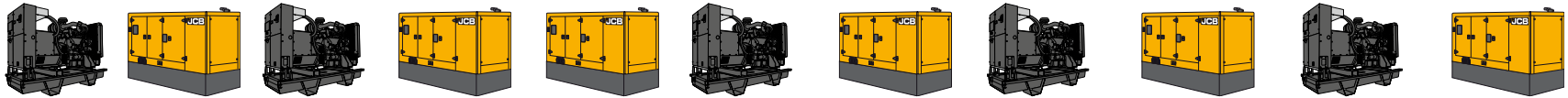
Easy servicing.

Our large service doors provide excellent access, for ultimate ease of maintenance.

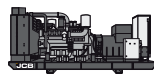
Freedom of movement.

A central lift point and standard-fit fork pockets make these generators easily portable and simple to secure in transit.





GENERATORS - STANDARD	G8X - G45X	G8QX - G45QX	G65X - G140X	G65QX - G140QX	G65QS - G130QS	G144X - G220X	G144QX - G220QX	G275X - G600X	G275QX - G600QX	G656X - G726X	G656QX - G726QX
Type - Open, Canopy	Open	Canopy	Open	Canopy	Canopy	Open	Canopy	Open	Canopy	Open	Canopy
Engine make	Yanmar	Yanmar	JCB	JCB	JCB Dieselmax	Iveco	Iveco	Scania	Scania	MTU	MTU
Prime power (PRP) at 50Hz 400V kVA	8 - 41	8 - 41	59 - 130	59 - 130	58 - 125	130 - 200	130 - 200	250 - 550	250 - 550	600 - 663	600 - 663
Standby power (ESP) at 50Hz 400V kVA	9 - 45	9 - 45	63 - 43	63 - 143	63 - 138	143 - 220	143 - 220	275 - 590	275 - 590	659 - 728	659 - 728
Length mm	1450 - 1850	1475 - 2100	2150 - 2450	2750	2850	2900	3300	3000 - 3600	3800 - 4500	3600	5000
Width mm	620 - 780	750 - 975	780 - 795	1100	1140	900	1200	1224 - 1460	1400 - 1800	1604	2100
Height mm	620 - 1500	1104 - 1349	1492 - 1590	1760	1830	1600	1958	1856 - 2090	2290 - 2340	2121	2369
Weight inc. oil and water Kg	288 - 626	456 - 960	1110 - 1078	1590 - 1720	-	1412 - 1567	2362 - 2517	2172 - 3313	3434 - 5023	4529 - 4671	6739 - 6881



GENERATORS - HEAVY	G730X - G3300X	G730QX - G2700QX
Type - Open, Container	Open	Container
Engine make	Mitsubishi, MTU	Mitsubishi, MTU
Prime power (PRP) at 50Hz 400V kVA	670 - 3026	670 - 2200
Standby power (ESP) at 50Hz 400V kVA	738 - 3334	738 - 2360
Length mm	3700 - 7450	20ft - 6056 / 40ft - 12192
Width mm	1690 - 2300	2438
Height mm	2275 - 2547	20ft - 2580 / 40ft - 2896



LIGHTING TOWERS	LT9	LT9 LED	LTM9
Lights	4 x 1000W Metal Halide	6 x 240W LED	4 x 1000W Metal Halide
Engine	Yanmar	Yanmar	Yanmar
Prime power (PRP) at 50Hz 230V kVA	6.4	6.4	5.1
Length mm	2330	2330	2760
Width mm	2450	2450	2780
Height mm	9000	9000	9070

LIVELINK, WORK SMARTER.

LIVELINK IS AN INNOVATIVE SOFTWARE SYSTEM THAT LETS YOU MANAGE JCB MACHINES REMOTELY – ONLINE, BY EMAIL OR BY MOBILE PHONE. ACCESS EVERYTHING FROM MACHINE ALERTS TO HISTORY INFORMATION, WITH ALL DATA STORED AT A SECURE CENTRE.

Productivity and cost benefits.

You can monitor and manage your machines fuel level throughout the day using the analysis function. LiveLink has a comprehensive reporting tool allowing you to manage your machines up time and utilisation to get the most of your machine.



Maintenance benefits.

Manage machine maintenance easily – accurate hours monitoring and service alerts improve maintenance planning, while real-time location data helps you manage your fleet. Critical machine alerts and maintenance history records are also available.



Security benefits.

LiveLink's real-time geofencing alerts tell you when machines move out of predetermined zones, and real-time curfew alerts inform you of unauthorised usage, straight to your mobile phone. Further benefits include real-time location information, and LiveLink has its own internal battery and aerial.



Note: LiveLink features are model dependent, check machine specifications.

JCB SUPPORT.

JCB IS NO ORDINARY COMPANY. FROM THE DREAMS OF ONE MAN, WE HAVE GROWN INTO THE WORLD'S LARGEST PRIVATELY OWNED COMPANY BY VOLUME. WE AIM FOR 100% SATISFACTION – IT'S ALL PART OF OUR PROMISE TO PUT YOU, THE CUSTOMER, FIRST.



1 JCB is one of the top three manufacturers of construction equipment with 22 manufacturing facilities across the world. Our Headquarters based in the UK is home to the world's best-selling backhoe loader and the world's best-selling telescopic handler.

2 Customers are at the heart of everything we do. Whatever a customer needs, we make it our mission to provide 100% satisfaction. Our 750 dealers, operating from 2000 locations, in 150 countries around the world are focused on putting customer needs first.

3 The global network of JCB Parts Centres is another model of efficiency; with 15 regional bases, we can deliver around 95% of all parts anywhere in the world within 24 hours. Our genuine JCB parts are designed to work in perfect harmony with your machine for optimum performance and productivity.

Lord Bamford, the son of Mr JCB still runs the company today.





ONE COMPANY, OVER 300 MACHINES.

Your nearest JCB dealer

AFRICA CONSTRUCTION RANGE

JCB Sales Limited, Rocester, Staffordshire, United Kingdom ST14 5JP.

Tel: +44 (0)1889 590312 Email: salesinfo@jcb.com

Download the very latest information on this product range at: www.jcbafrica.com

©2009 JCB Sales. All rights reserved. No part of this publication may be reproduced, stored in a retrieval system, or transmitted in any form or by any other means, electronic, mechanical, photocopying or otherwise, without prior permission from JCB Sales. All references in this publication to operating weights, sizes, capacities and other performance measurements are provided for guidance only and may vary dependant upon the exact specification of machine. They should not therefore be relied upon in relation to suitability for a particular application. Guidance and advice should always be sought from your JCB Dealer. JCB reserves the right to change specifications without notice. Illustrations and specifications shown may include optional equipment and accessories. All images are correct at time of print. The JCB logo is a registered trademark of J C Bamford Excavators Ltd.

